

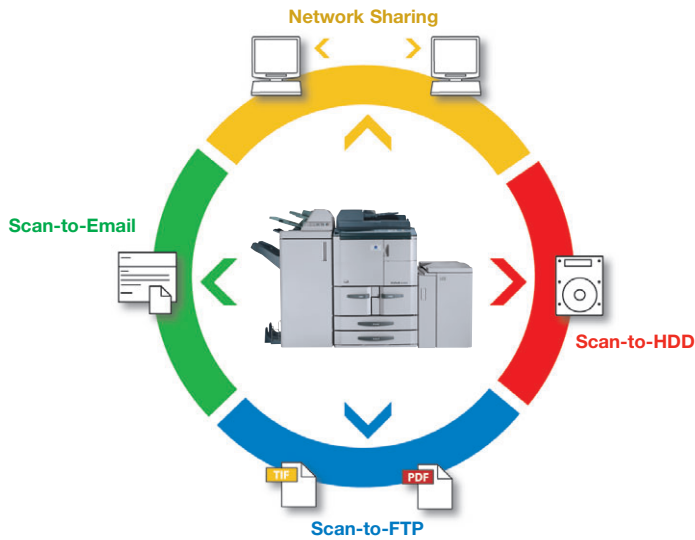
Move beyond the limits of time or place.



Digital Printer/Copier/Scanner. Move information in more directions, faster and more efficiently – all from the hub of your business. Print and finish. Scan and share. Manage and control your documents and devices. And power up your workflow.



The essentials of imaging



bizhub integrates your workflow.

The bizhub Di7210 and Di5510 are simple, integrated solutions that move information in whatever form best suits your workflow. They carry you into a seamless world of in-house printing, scanning, printing and finishing from a central resource that lets you share, save, manage and manipulate documents more easily. They're designed to help you increase productivity and reduce costs by selecting the output speed that matches your traffic – high-volume 72 ppm with the bizhub Di7210, or mid-volume to high-volume 55 ppm with the bizhub Di5510. Both bizhub systems give you increased paper capacity, improved image quality, precise paper handling to maximize uptime, and a monthly duty cycle of up to 300,000 pages. And both provide modular options to meet specific demands – for a scalable solution with right-size performance.

Let bizhub keep your information moving.

That's the challenge you face in today's competitive, high-speed digital workplace. Sharing information more effectively. Printing and finishing with point-and-click simplicity. Managing your network. Accessing your documents. Increasing productivity. Reducing costs. And that's why you need bizhub – because bizhub does it all.

bizhub powers up your printing.

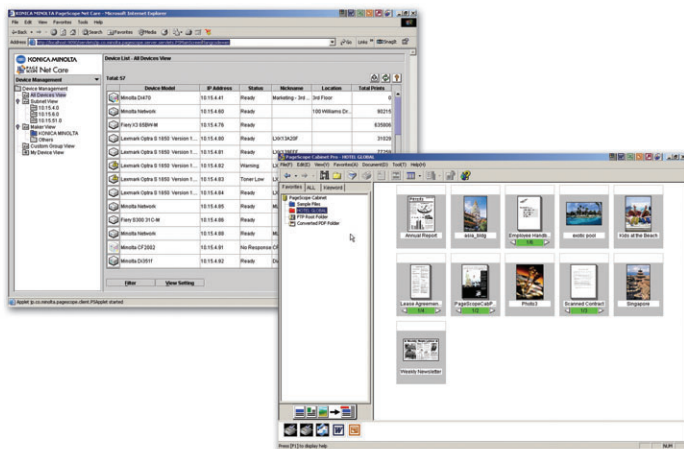
Why go outside for the documents you need? With the bizhub Di7210 and Di5510, you'll have powerful tools for high-speed on-demand printing. With exclusive Simitri® Polymerized Toner, your print/copy quality never looked better – finer detail, more legible text and superior halftone definition. And your Pi7200e Print Controller option opens up a world of advanced Fiery® print utilities. Including Fiery® DocBuilder™ for document preview and assembly, Fiery® FreeForm™ for variable data printing, Fiery WebTools for web-based print control and more. Tandem Copy capability even lets you double your output – up to 144 ppm, for twice the productivity.

Fast, flexible scanning and distribution.

Configured with the the Pi7200e Print Controller, your bizhub Di7210 or Di5510 becomes a central resource for scanning and distributing documents throughout your organization. Scan-to-Email sends documents as attachments to Email addresses. Scan-to-FTP saves documents in PDF or TIFF format. And Scan-to-HDD stores files on the hard disk drive of your Pi7200e, for immediate downloading, saving in personal file folders, or sharing over your network.

PageScope software for total control.

With bizhub, you're in control – and PageScope software gives you even more power. PageScope Web Connection and PageScope Net Care provide web-browser access to device status and setup. PageScope Cabinet Pro gives you a personal document management solution, with advanced capabilities like OCR, image enhancement and file format conversion. And PageScope Address Book Utility (ABU) helps you import address information directly to your bizhub MFP from LDAP-compliant servers.





User-Friendly Control Panel: Large function keys and intuitive, easy-to-read touch-screen menus make bizhub operation easy even for first-time users.

Tandem Copy Mode: Combine two bizhub Di7210 or Di5510 printer/copiers in tandem to produce large copy jobs in half the time.

bizhub Di7210 & Di5510 Features:

Simitri® Polymerized Toner: Uses ultra-fine particles of smaller size and more consistent shape to improve detail and definition, giving your prints and copies sharper text, crisper images and superior halftones.

Heavy Paper Stock: The bizhub Di7210 and Di5510 accept thicker paper – up to 110 lb. index, OHP transparencies and tab pages.

Booklet Making: Create folded, saddle-stitched booklets – folding and stapling up to 20 11" x 17" sheets, for finished booklets of up to 80 pages.

Sort, Staple, Group, Fold: You can also sort, group, and staple documents in multiple positions – even Z-fold wide spreadsheets or tri-fold sheets, great for producing direct-mail flyers.

Hole-Punching: You can automatically 2-hole or 3-hole punch documents on-line – no more need to stock pre-drilled paper.

Basic Offset Output: The new OT-104 Shift Tray offers a low-cost, small-footprint output option for applications that don't require finishing.

Cover Inserter: Add pre-printed covers – even color covers – to documents post-process (as they enter the finisher) to avoid toner bleeding.

Expandable Memory Capacity: Up to a maximum of 576 MB, for storing scanned pages and job information as well as auto job handling and recall.

Secure Printing: Send confidential print jobs that won't print out until you input a secure password at your bizhub Di7120 or Di5510 control panel.

Large Maximum Paper Capacity: Add a 4,000-sheet large capacity cabinet, and your paper capacity expands to 7,600 sheets – enough to handle long print/copy runs with minimal reloading.

New Scan Counter: On-screen display plus printout capability: total counter, copier counter, print counter, scan counter.

Copier Hard Disk Drive: An option that allows you to scan and store forms digitally in secure, password-protected "mailboxes" for later retrieval and reprinting.



bizhub Di7210 & Di5510

General Specifications

TYPE:
Digital Printer/Copier/Scanner

IMAGING SYSTEM:
Laser Electrostatic

DEVELOPMENT SYSTEM:
Dual Dry Component with Simitri®
Polymerized Toner

PRINT/COPY SPEED:
bizhub Di7210:
72 ppm (8-1/2" x 11", letter-portrait)
56 ppm (8-1/2" x 11", letter-R)
47 ppm (8-1/2" x 14", legal)
40 ppm (11" x 17", ledger)
bizhub Di5510:
55 ppm (8-1/2" x 11", letter-portrait)
45 ppm (8-1/2" x 11", letter-R)
37 ppm (8-1/2" x 14", legal)
32 ppm (11" x 17", ledger)

MONTHLY DUTY CYCLE:
300,000 pages

IMAGE RESOLUTION:
True 600 x 600 dpi

HALFTONE REPRODUCTION:
256 gradations

MEMORY:
64 MB (standard)
576 MB (maximum)

WARM-UP TIME:
5 minutes (approx.)

FIRST COPY:
3.4 seconds (approx.)

COPY QUANTITY:
1 - 9,999 copies (countdown,
interrupt capability)

MAGNIFICATION:
Zoom range: 25 - 400%,
1% increments
Preset reduction:
93%, 77%, 65%, 50%
Preset enlargement:
121%, 129%, 155%, 200%

EXPOSURE MODES:
Auto
Text
Photo
Text/Photo
Manual

ORIGINAL SIZE:
To 11" x 17" maximum

PAPER SIZE:
5-1/2" x 8-1/2" to 12" x 18"

PAPER WEIGHT:
13 lb. bond to 110 lb. index;
OHP transparencies, labels,
tab pages

PAPER SUPPLY:
1,500-sheet paper drawer
(letter-portrait)
1,000-sheet paper drawer
(letter-portrait)
500-sheet universal paper
drawers (2)
100-sheet bypass

OPTIONAL PAPER SUPPLIES:
4,000-sheet large capacity
cabinet (letter-portrait)
4,000-sheet large capacity
cabinet (up to 12" x 18")

MAXIMUM PAPER CAPACITY
7,600 sheets (total, with options)

DOCUMENT FEEDER
Reversing Auto Document Feeder
Speed: 72 ppm (Di7210),
55 ppm (Di5510)
Paper Capacity: up to 100 sheets
Paper Size:
5-1/2" x 8-1/2" to 11" x 17"
Paper Weight:
13 lb. bond to 34 lb. index

POWER REQUIREMENTS:
120 V, 16 A, 60 Hz

POWER CONSUMPTION:
1,920 VA (max. with full options)

DIMENSIONS (W x D x H):
25-5/8" x 29-7/8" x 44-7/8"
(650 x 760 x 1140mm)

WEIGHT:
450 lbs. 14 oz. (204.5 kg)

OPTIONS:
Pi7200e EFI Fiery® Internal Print
Controller
PostScript/Scan Kit for Pi7200e
FN-121 Multi-Stapling Finisher
(sort, staple)
FN-122 Multi-Stapling Finisher
(sort, staple, selectable
2-hole/3-hole punch)
FN-115 Multi-Stapling Finisher
(staples up to 100 sheets)
FN-10 Booklet Finisher (sort, group,
staple, half-fold, tri-fold)
PK-5 Punch Kit
(3-hole and 2-hole versions)
ZK-2/ZK-3 Z-Fold/Punch Kit
(for FN-10, FN-121 and
FN-115 Finishers)
Cover Inserter B
OT-104 Offset Tray
C-403 Large Capacity Cabinet
(4,000 sheets: letter, portrait)
C-404 Large Capacity Cabinet
(4,000 sheets, up to 12" x 18")
HDD-2 Hard Disk Drive (for forms
storage, watermarks, overlays)
64 MB Memory Upgrade (M64-1)
128 MB Memory Upgrade (M128-1)
256 MB Memory Upgrade (M256-1)
512 MB Memory Upgrade (M512-1)

Available Functions*

APS/AMS
Auto Document Feeding
Auto Duplex, Stackless
Auto Layout (centering)
Auto Low Power, Reset, Shutoff
Auto/Text/Photo/Increase
Contrast Exposure Modes
Auto Tray Switching
Book Copy
Booklet Making
Border Erase
(frame, fold, frame & fold)
Cover Insertion
Criss/Cross Sorting
Electronic Copy Monitor
(1,000 accounts)

Available Functions Continued

Energy Save Mode
Erase (frame, fold, non-image area)
Face-Up or Face-Down Output
Folding (half-fold, tri-fold, Z-fold)
Grouping
Hole-Punching (2-hole, 3-hole)
Image Insert (overlay, with
memory capability)
Image Overlay (scanned image
onto copied image)
Image Repeat
Image Rotation
Image Shift
Intelligent Job Building
Interrupt (pause)
Job Memory, Recall, Reserve
(30 jobs)
Job Status
Mixed Original Detection
Negative Image Capability
OHP Interleave
(blank or copied sheets)
Print Spooling
Proof Copy
Remote Scan
RIP-While-Print™
Rotation Exit (horizontal/vertical)
Saddle-Stitching (center stapling)
Scan Counter
Scanning (Email, FTP, PC, HDD,
TWIN scan)
Separate Scanning (Job Building)
Sorting
Stamping (continuous)
Stapling (single or multi-position)
Storyboarding (2-in-1, 4-in-1,
8-in-1, even 16-in-1 from
print driver)
Tabs (from tabbed originals to
tabbed sheets)
Tandem Copy Capability
Weekly Timer
Zoom

Pi7200e Specifications

TYPE:
Internal Fiery® Print Controller

CENTRAL PROCESSING UNIT:
Mobile Intel® Celeron® @ 366MHz

OPERATING SYSTEM:
Linux

HARD DISK DRIVE:
10 GB (optional)

PRINT SPEED:
55 ppm (letter)

PRINT RESOLUTION:
True 600 x 600 dpi (2400 x 600 dpi
with smoothing)

PRINT DRIVERS:
Windows 98, ME, NT, 2000, XP;
Mac OS 8.6-9.x, Mac OS X

PAGE DESCRIPTION LANGUAGE:
PCL 6
Adobe PostScript 3 (option)

FONTS:
PCL Fonts: 81
PostScript Fonts: 136 (option)



Pi7200e Specifications Continued

INTERFACE:
Ethernet 10/100 Base T
Parallel IEEE 1284
Token Ring (optional)

NETWIRE™ NETWORKING:
Simultaneous Auto-Switching
Protocols: EtherTalk, TCP/IP,
Ethernet II, SNMP
Autosensing Ports:
AUI, RJ45, Parallel
10/100BaseT Standard Support
Native "Peer-to-Peer"
Windows Printing

PROTOCOLS:
EtherTalk
IPX/SPX (Supports NDS)
TCP/IP
HTTP
SNMP
IPP

LANGUAGES:
English, German, French,
Italian, Spanish

POWER REQUIREMENTS:
5.2 V/6 A, 12 V/0.2 A
(printer-connected)

PAGESCOPE APPLICATIONS:
Network & Device Management
PageScope Web Connection
PageScope Net Care
PageScope Network Setup
PageScope EMS Plug-Ins
PageScope NDPS Gateway
PageScope Address Book
Utility (ABU)
Document Workflow Management
PageScope Cabinet Pro
PageScope Router

**FIERY® PRINT UTILITIES
(PS/Scan option required):**
Fiery® Command Workstation™ 4
Fiery® DocBuilder™
Fiery® Downloader™
Fiery® FreeForm™
Fiery® Remote Scan™ 5
Fiery® Spooler™
Fiery® WebTools™
WebStatus™
WebDownloader™
WebSpooler™
WebLink™
WebSetup™
WebInstall™
WebScan™
Print Status™

OPTIONAL SOFTWARE:
Fiery® DocBuilder Pro
PageScope Router
PrintMe™
Rebus Recollect®

SCAN FUNCTIONS:
Scan-to-Email
Scan-to-FTP
Scan-to-HDD
Scan-to-PC
TWIN Scan



© 2004 KONICA MINOLTA BUSINESS SOLUTIONS U.S.A., INC. All rights reserved. Reproduction in whole or in part without written permission is prohibited. Konica Minolta and The essentials of imaging are trademarks of KONICA MINOLTA HOLDINGS, INC. bizhub and PageScope are trademarks of KONICA MINOLTA BUSINESS TECHNOLOGIES, INC. Simitri is a registered trademark of KONICA MINOLTA BUSINESS SOLUTIONS. All other brands and product names are registered trademarks or trademarks of their respective owners.

Design & specifications are subject to change without notice.



KONICA MINOLTA

KONICA MINOLTA BUSINESS SOLUTIONS U.S.A., INC.

100 Williams Drive
Ramsey, NJ 07446

www.kmbs.konicaminolta.us